

**January 17, 2020 ▲ Hospital spending growth continues to drive national health spending acceleration**

**HIGHLIGHTS**

- ▲ At \$3.90 trillion (seasonally adjusted annual rate), national health spending<sup>1</sup> in November 2019 was 5.4% higher than in November 2018.
- ▲ The November 2019 nominal gross domestic product (GDP) growth over a 12-month period was 4.1%, and the resulting health spending share of GDP was 17.9% and 18.1% of PGDP.
- ▲ Spending in November 2019, year over year, increased in all major categories. Spending on hospital care grew the fastest, at 7.7%. Growth in spending on home health care was the slowest, at 2.5%.

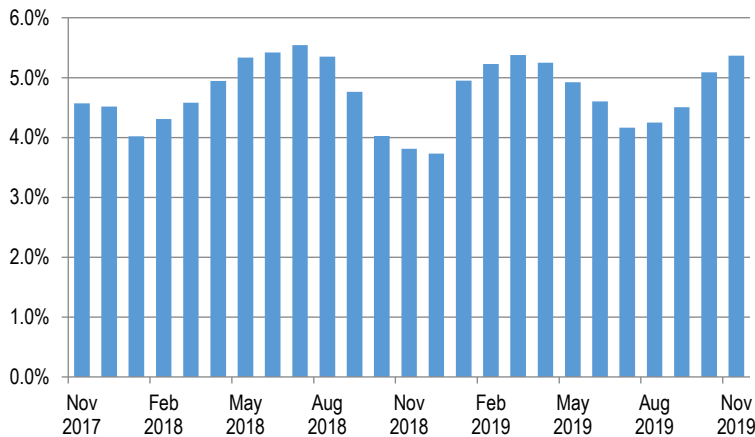
National Health Spending and GDP*				
	Nov 2017	Nov 2018	Oct 2019	Nov 2019
GDP	19.95	20.87	21.69	21.74
National Health Spending	3.56	3.70	3.88	3.90
Health Spending Share of GDP	17.9%	17.7%	17.9%	17.9%
Health Spending Share of PGDP	17.9%	17.8%	18.0%	18.1%
Growth from Prior 12 Months				
Health Spending	4.6%	3.8%	5.1%	5.4%
GDP	4.7%	4.6%	3.6%	4.1%
Health Spending Minus GDP	-0.2%	-0.8%	1.5%	1.2%
Health Spending Minus PGDP	0.7%	-0.6%	1.4%	1.6%

Source: Altarum monthly health spending estimates (see Methods on page 4). Monthly GDP is from Macroeconomic Advisers and Altarum estimates. PGDP, defined as what GDP would be at full employment, is from the quarterly Congressional Budget Office estimates, converted to monthly by Altarum.  
\* Spending is in trillions of dollars at a seasonally adjusted annual rate

**HEALTH SPENDING**

In November 2019, health spending reached a seasonally adjusted annual rate (SAAR) of \$3.90 trillion, slightly above its October value of \$3.88 trillion. November’s health spending accounted for 17.9% of GDP. As a share of potential GDP (PGDP), November spending was 18.1%. Year over year, health spending in November grew by 5.4%, somewhat greater than the October rate of 5.1% (Exhibit 1). Exhibits 7 and 8 show long-term comparisons.

**Exhibit 1. Year-over-Year Growth Rates in Health Spending**

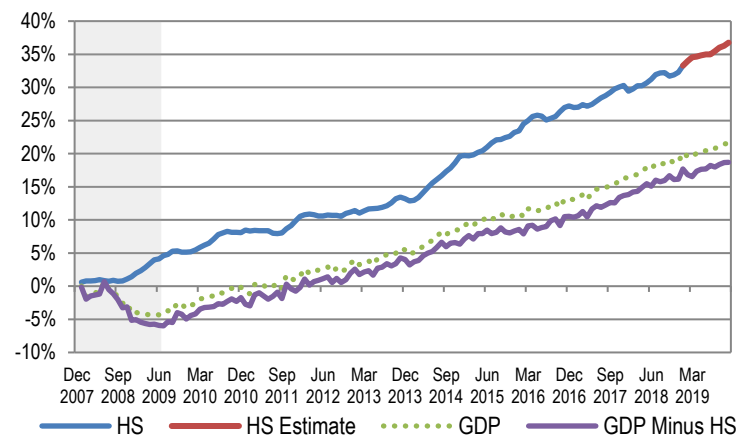


Source: Altarum monthly health spending estimates.

Note: This exhibit compares a given month’s health spending with that of the same month from the previous year.

Since the start of the recession in December 2007, real health spending (using the GDP deflator) through November 2019 has increased by 36.8% (an annual rate of 2.7%). Real GDP, excluding health spending, fell by more than 6% in mid-2009, and is now 18.7% above its December 2007 level. Including health care, real GDP in November was 21.6% above its pre-recession level (Exhibit 2).

**Exhibit 2. Health Spending and GDP: Cumulative Percentage Change (Constant Dollars) Since December 2007**



Source: “Health spending” (HS) consists of Altarum monthly estimates that match the government’s official National Health Expenditure Accounts (NHEA). “HS estimates” are Altarum estimates designed to be consistent with future NHEA values. Monthly GDP is from Macroeconomic Advisers and Altarum estimates.

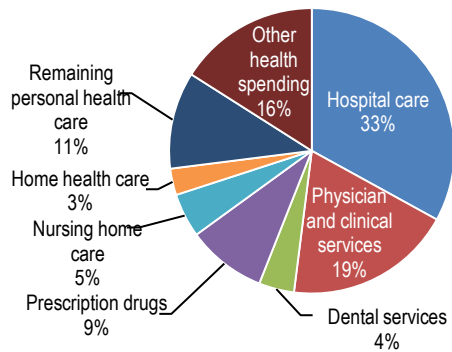
Note: Shading indicates the recession period.

## HEALTH CARE SPENDING BY CATEGORY

In November 2019:

- ▲ Hospital spending was \$1.291 trillion (SAAR) and represented 33% of total health spending (Exhibits 3 and 5).
- ▲ Physician and clinical services spending was \$757 billion, representing 19% of total health spending.
- ▲ Prescription drug spending was \$369 billion, 9% of total health spending.
- ▲ Nursing home care and home health care spending combined were \$290 billion, 8% of total health spending.
- ▲ Spending on personal health care goods and services accounted for 84% of total health spending. Other major components include public health, research, construction, and net cost of private insurance.

Exhibit 3. Health Spending by Category, November 2019

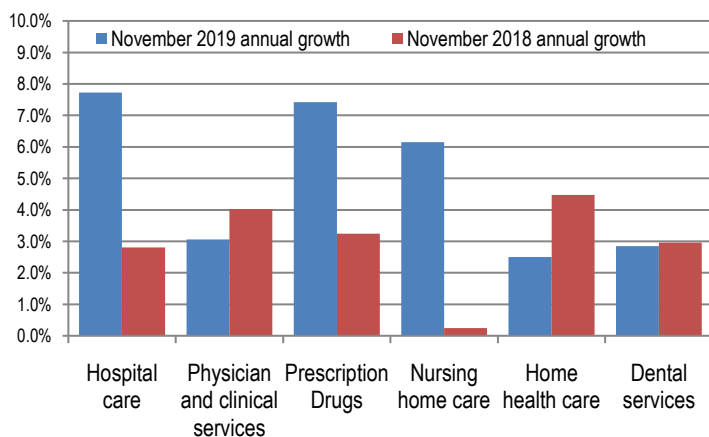


Source: Altarum monthly national health spending estimates.

Note: See Exhibit 5 for a complete list of spending categories.

**Growth over the past 12 months:** Spending on hospital care grew most rapidly among the major categories, at 7.7%. Expenditures for home health care grew the slowest, at 2.5%. For the preceding 12-month period ending November 2018, spending on home health care showed the highest growth among the major categories, at 4.5%. Growth in spending on nursing home care was lowest, at 0.2% (Exhibits 4 and 6).

Exhibit 4. Health Spending Year-over-Year Growth for Selected Categories



Source: Altarum monthly national health spending estimates.

## DISCUSSION

In November 2019, year-over-year national health spending growth increased for the fourth consecutive month, from 4.2% in July to its current growth rate of 5.4%, the latter being the highest growth rate since March of this year. However, strong GDP growth, though somewhat lower than in 2018, has helped keep the health spending share of GDP stable at 17.9% in November. This share has not exceeded 18% since May 2016, the only month in our time series in which it slightly surpassed the 18% mark.

This acceleration in health spending continues to be driven primarily by hospital spending growth, which has risen from 4.3% in July of this year to 7.7% in November, year over year. Year-over-year prescription drug spending growth also remains high but somewhat stable at 7.4% in November.

Year-to-date growth in health spending stands at 4.9% for the first 11 months of 2019, year over year, with the largest growth rates occurring for prescription drugs (7.6%) and nursing home care (7.1%). Hospital spending for the first 11 months of 2019 grew at a year-over-year rate of 5.8%.

The 4.9% year-to-date growth in health spending is close to the 4.8% growth projected by CMS for all of 2019 in its most recent forecast, published in February 2019.<sup>2</sup> We anticipate seeing updated CMS projections late next month.

<sup>1</sup> Altarum's monthly estimates of national health spending are intended to approximate the official National Health Expenditure Accounts (NHEA) produced annually by the Centers for Medicare & Medicaid Services (CMS). Our estimates match NHEA values that are currently available through 2017 and (for some spending categories) NHEA projections for 2018.

<sup>2</sup> Sisko AM et al. National Health Expenditure Projections, 2018-27: Economic and Demographic Trends Drive Spending and Enrollment Growth. Health Affairs. Published February 20, 2019. Available at: <https://www.healthaffairs.org/doi/full/10.1377/hlthaff.2018.05499>.

## Follow us on Twitter: @ALTARUM\_SHSS

Altarum is a 501(c)(3) nonprofit health care research and consulting organization. Altarum integrates independent research and client-centered consulting to deliver comprehensive, system-based solutions that improve health and health care. Since 2011, Altarum has researched cost growth trends and key drivers of U.S. health spending and formulated policy strategies to help bend the cost growth curve. In large part, this work was made possible through generous support from the Robert Wood Johnson Foundation.

*The Health Sector Economic Indicators*<sup>SM</sup> reports are a monthly publication of Altarum and provide an analysis of health spending, employment, and prices. For more information, contact Paul Hughes-Cromwick, at 734-302-4616 or [paul.hughes-cromwick@altarum.org](mailto:paul.hughes-cromwick@altarum.org). George Miller, PhD (principal author), Paul Hughes-Cromwick, Ani Turner, and Matt Daly, PhD, contributed to this brief. Media Contact: Sarah Litton, 202-772-5062. [press@altarum.org](mailto:press@altarum.org). For more information, visit <http://altarum.org/solution/health-sector-spending>.

## DETAILED HEALTH SPENDING

Exhibit 5. Monthly National Spending Estimates by Detailed Category

Levels (in billions of dollars)	Nov 2016	Nov 2017	Nov 2018	Nov 2019
GDP	\$19,044.8	\$19,946.5	\$20,871.1	\$21,736.7
National health spending	\$3,407.5	\$3,563.3	\$3,699.0	\$3,897.4
Personal health care	\$2,892.1	\$3,014.9	\$3,115.7	\$3,293.3
Hospital expenditures	\$1,112.7	\$1,166.2	\$1,198.8	\$1,291.5
Physician and clinical expenditures	\$682.8	\$706.3	\$734.7	\$757.1
Other professional services expenditures	\$93.9	\$100.2	\$105.7	\$112.6
Dental services expenditures	\$125.5	\$133.0	\$136.9	\$140.8
Other health, residential, and personal care expenditures	\$177.0	\$186.7	\$194.6	\$204.0
Home health care expenditures	\$94.3	\$99.2	\$103.6	\$106.2
Nursing care facilities and continuing care retirement communities	\$166.1	\$172.5	\$173.0	\$183.6
Prescription drug expenditures	\$326.3	\$332.4	\$343.2	\$368.7
Durable medical equipment expenditures	\$51.1	\$53.2	\$56.8	\$58.3
Nondurable medical products expenditures	\$62.4	\$65.3	\$68.3	\$70.5
Administration and net cost of health insurance expenditures	\$265.6	\$284.5	\$312.0	\$320.0
Public health activity	\$89.7	\$92.2	\$94.4	\$97.2
Research	\$48.2	\$51.1	\$53.5	\$56.3
Structures and equipment	\$111.9	\$120.5	\$123.3	\$130.7
National health spending share of GDP	17.9%	17.9%	17.7%	17.9%
National health spending share of PGDP	17.8%	17.9%	17.8%	18.1%

Source: Altarum monthly national health spending estimates. The monthly GDP is from Macroeconomic Advisers and Altarum estimates.

Note: Spending is expressed in billions of dollars at a SAAR.

Exhibit 6. National Health Spending 12-Month Growth Rates by Detailed Category

Growth Rates	Nov 2017	Nov 2018	Nov 2019
GDP	4.7%	4.6%	4.1%
National health spending	4.6%	3.8%	5.4%
Personal health care	4.2%	3.3%	5.7%
Hospital expenditures	4.8%	2.8%	7.7%
Physician and clinical expenditures	3.4%	4.0%	3.1%
Other professional services expenditures	6.7%	5.6%	6.5%
Dental services expenditures	6.0%	3.0%	2.8%
Other health, residential, and personal care expenditures	5.5%	4.2%	4.8%
Home health care expenditures	5.2%	4.5%	2.5%
Nursing care facilities and continuing care retirement communities	3.8%	0.2%	6.1%
Prescription drug expenditures	1.9%	3.2%	7.4%
Durable medical equipment expenditures	4.0%	6.9%	2.6%
Nondurable medical products expenditures	4.6%	4.7%	3.2%
Administration and net cost of health insurance expenditures	7.1%	9.7%	2.5%
Public health activity	2.8%	2.4%	2.9%
Research	6.0%	4.7%	5.2%
Structures and equipment	7.7%	2.3%	6.0%
National health spending minus GDP	-0.2%	-0.8%	1.2%
National health spending minus PGDP	0.7%	-0.6%	1.6%

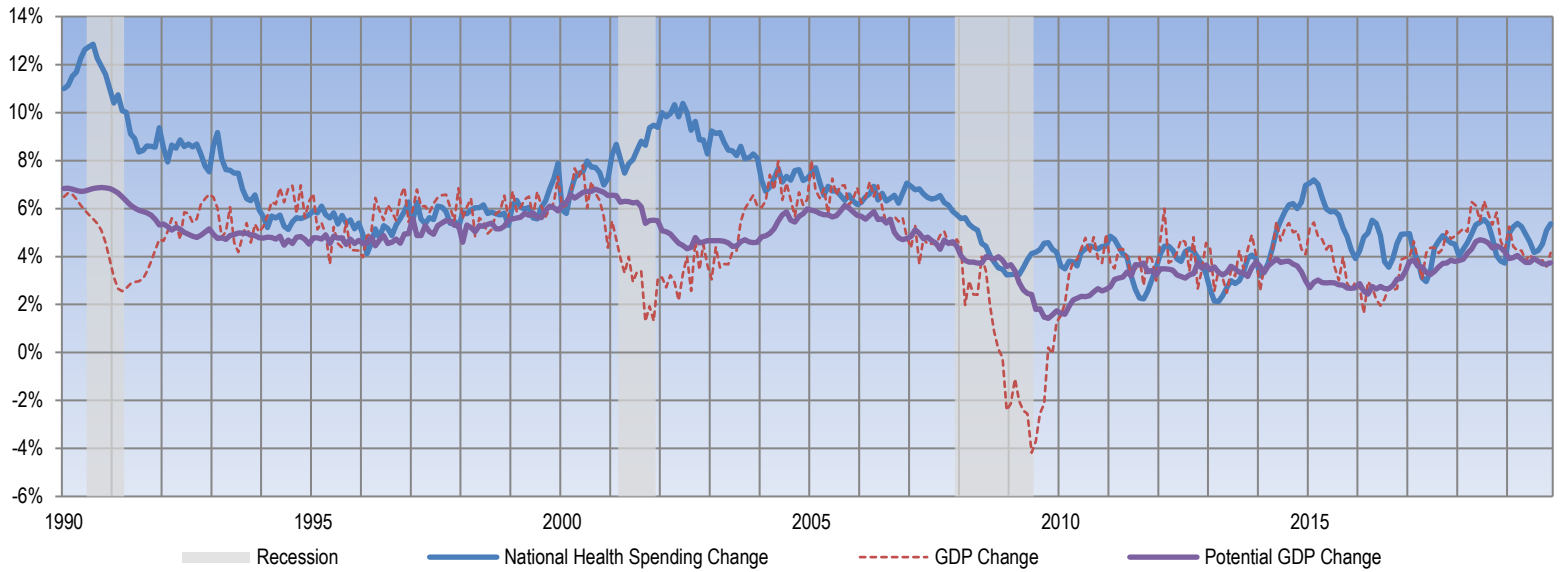
Source: Computed from Exhibit 5.

Note: This exhibit compares monthly national health spending to that of the same month from the previous year.



## TIME SERIES TRACKER

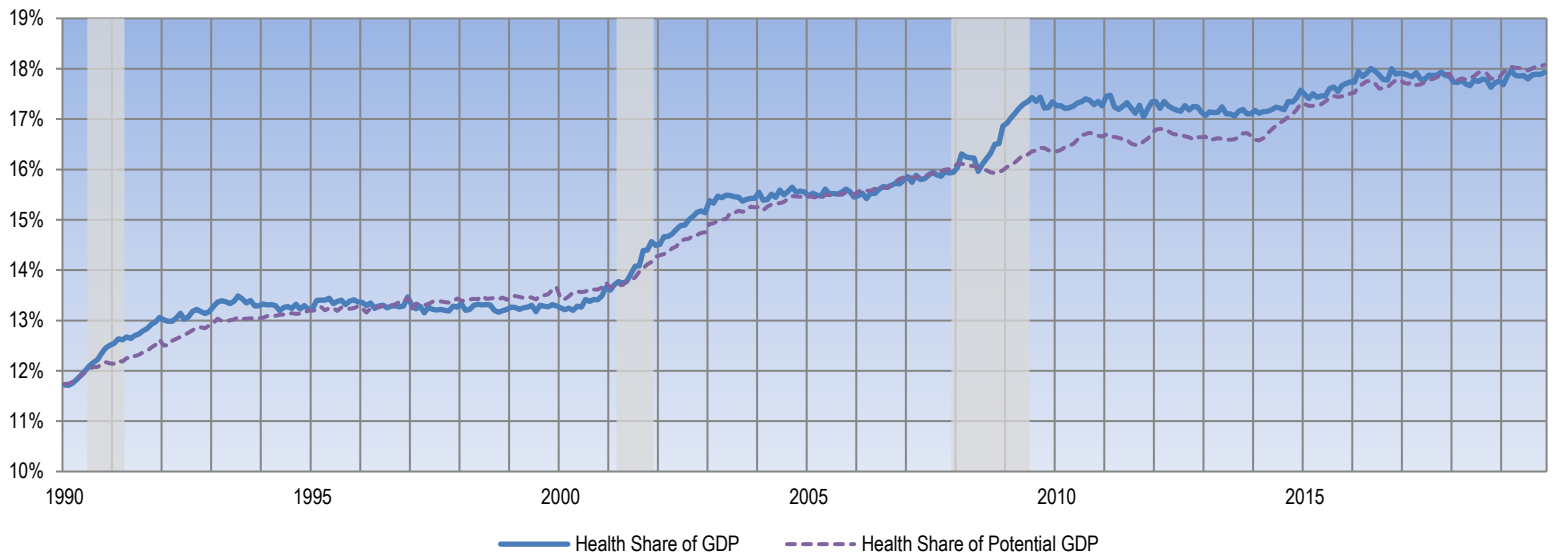
Exhibit 7. Year-over-Year Percentage Change in Spending and GDP



Source: Altarum monthly national health spending estimates. Monthly GDP is from Macroeconomic Advisers and Altarum estimates.

Note: Lightly shaded bars denote recession periods.

Exhibit 8. Monthly Health Spending as a Percentage of Monthly GDP



Source: Altarum monthly national health spending estimates. Monthly GDP is from Macroeconomic Advisers and Altarum estimates. PGDP is from the U.S. Congressional Budget Office and has been converted to monthly estimates.

Note: Lightly shaded bars denote recession periods.

**Methods.** Altarum’s estimates are based on BEA monthly health spending (<http://www.bea.gov/iTable/iTable.cfm?ReqID=12&step=1>) and CMS annual NHE estimates (1990–2018) and projections (2019) (<https://www.cms.gov/Research-Statistics-Data-and-Systems/Statistics-Trends-and-Reports/NationalHealthExpendData/index.html>). BEA spending categories are matched to NHEA components by using information presented in the following: Hartman, M. B., Kornfeld, R. J., & Catlin, A. C. (2010, September). A reconciliation of health care expenditures in the National Health Expenditures Accounts and in gross domestic product. *Survey of Current Business*, 90(9), 42–52. For all NHEA personal health care categories except “other health, residential, and personal care,” monthly estimates are based on BEA spending adjusted to NHEA by using annual ratios. For the remaining categories, national health spending estimates and projections are allocated across months by using a simple trend. Annual ratio adjustments through 2018 are based on NHEA actuals and ensure that monthly estimates sum exactly to NHEA annual amounts. The 2018 ratios are used to adjust BEA spending for months in 2019.